



ENTERPRISE BACKUP FOR SECURITY DEVICES

Network devices fail all too often and when they do, recovery can be difficult and the outage costly. Failures come from lots of sources including hardware, software and operating system malfunctions, misconfigurations, upgrades and high-availability replication.

When failures occur, recovery time needs to be short. Homegrown scripts are ineffective and unreliable. You need recent, verified backups of all your network devices in a centralized, secure location. You need **BackBox**.

SCALABLE, RELIABLE DEVICES BACKUP

Firewalls, routers, switches, content filters and load balancers make up the core of networking devices in the enterprise today. All of them play critical roles in the availability and security of the network, and it is important to ensure they continue to function correctly.

CENTRAL AND SECURE BACKUPS:

BackBox provides a single, central location for all your network device backups, ensuring that recovery always starts from the same location. It is protected by a state-of-the-art infrastructure to ensure no compromise of your critical configurations.

REAL-TIME REPORTING:

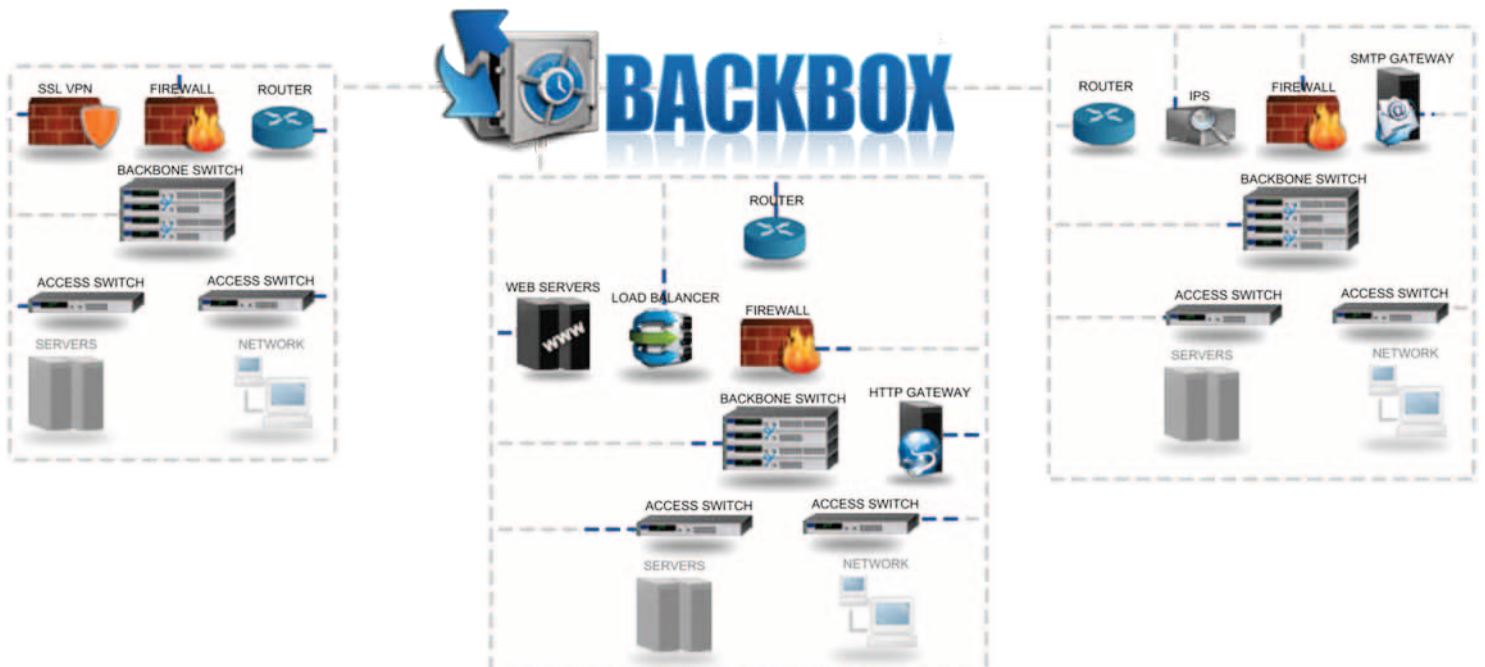
To ensure that management and compliance initiatives are met, **BackBox** provides a full suite of reporting, including a live dashboard with real-time status, a detailed backup log, and alerts and notifications.

VERIFIED FOR RECOVERY:

A backup is worthwhile only if it is usable when you need it. **BackBox**'s verification system ensures that all of the components necessary for restoration are captured and usable.

DISASTER RECOVERY:

Backup is a central function in most disaster recovery plans. **BackBox** supports disaster recovery planning and execution with the templates and procedures necessary for quick and successful recovery.



SOLUTION OVERVIEW

FEATURE-RICH SOLUTION

BackBox is a full-featured backup system that is ready to deploy in the Enterprise. It can be customized with a variety of different options. It supports automated and scheduled backups, three tiers of administration and web-based management.

SCALABLE

Having all your backups in one place is important to ensure you can restore quickly and easily. **BackBox** is built to scale. On your hardware or ours, **BackBox** can handle thousands of devices that require frequent backup.

MULTI-VENDOR SOLUTION



SECURITY FOR YOUR SECURITY CONFIGURATIONS

The **BackBox** infrastructure provides a secure repository for your security device configurations. Its hardened OS, internal firewall, encrypted passwords and secure communication with all devices mean you can rest easy.

COMPLY WITH REGULATIONS

Many compliance guidelines and regulations require that the network infrastructure have a full disaster recovery plan. **BackBox** helps organizations quickly and cost effectively meet those regulatory burdens with real-time, off-box backups.

COMPARISON CHART

Feature	BackBox	Syslog based solutions	Open Source
Built-in Multi Vendor Support	✓	✓	✗
Dashboard interface for quick visibility of device status	✓	✗	✗
Multi-Method Backup verification	✓	✗	✗
Delegated Administration	✓	✗	✗
Scheduled Backups	✓	✓	✓
Off-box storage	✓	✗	✓
Real-time logging	✓	✗	✗
Reporting	✓	✗	✗
Real-time device testing	✓	✗	✗
Device Statistics	✓	✗	✗
HTML Job Notification	✓	✗	✗
Device Grouping and Filtering for Large Organizations	✓	✗	✗
VM Support	✓	✗	✓
Full support for new devices types	✓	✗	✗

✓ Yes ✗ No ⚡ Partial * Not built-in, requires user customization ** Slow response for new device types

FEATURES

- Live dashboard with Real-Time Backup status display
- Backup file Verification
- Real-Time and Scheduled Reporting
- Automated and Scheduled Backups from a single location
- Central application for all security and networking backup configurations
- Web-based management
- Alerts and notifications
- Disaster recovery templates (including end-user custom procedures)
- Multi-Vendor Support
- Generic device and new product updates
- Built in Dynamic Firewall
- 3-Tier Administration (including RADIUS authentication support)
- ASCII configuration file comparison
- Secure Virtual Appliance Installation
- Syslog alerts for SIEM/SOC Integration

SYSTEM REQUIREMENTS

- Intel CPU with 2 CPU Cores
 - Disk Space – 50GB (additional disk space is based on the number of backups retained)
 - Memory: 2GB RAM
 - At least One Network Interface Cards (NICs)
- For installation, either:
 - A bootable CD drive
 - VMWare
 - Microsoft Hyper-V

Contact us today for a **FREE** evaluation of BackBox.

Safeway Solutions LTD. - 15 Hamelacha St., Rosh-Haain Israel, 48091

Tel: 972-73-Safeway E-mail: info@backbox.co Web: www.backbox.co