

Sophos Switch



Sophos Switch Series

The Sophos Switch Series offers a range of cloud-managed, network access layer switches to connect, power, and control device access at the LAN edge. Sophos Central provides a single console to manage your switches alongside your other Sophos security solutions.

Connectivity, power, and control

The Sophos Switch Series delivers a range of gigabit and multi-gigabit network access layer switches to seamlessly connect and power the devices on your LAN. Our switches give you control over device access, reducing the attack surface with port security and VLAN segmentation while adding quality of service at the all-important access layer.

Unleash your network's potential

Sophos multi-gigabit switches offer a future-proof solution to avoid network bottlenecks. As bandwidth demands soar, traditional gigabit Ethernet struggles to keep up. Sophos multi-gig connectivity across your firewalls, access points, and switches provides the necessary throughput to handle evolving connectivity requirements, enabling you to confidently scale your operations and support emerging technologies while maintaining a high-performance user experience.

Unified management for your switches and more

Your Sophos switches can be managed in different ways. Use Sophos Central for management and visibility alongside your other Sophos solutions, open the local web interface and command line interface, or use SNMP for additional configuration options.

SMB and SD-branch use cases

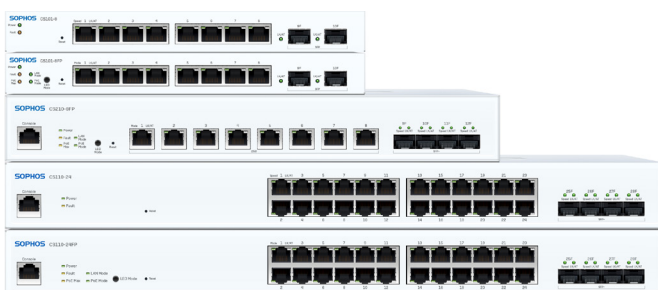
Sophos switches suit the connectivity needs of many organizations: remote and home offices, small and medium-sized businesses, retail outlets, and branch offices.

One vendor, one view

Sophos switches seamlessly integrate with your existing Sophos solutions and so remove the risks of multi-vendor deployments.

Highlights

- Gigabit and multi-gigabit (up to 10 GE) access layer switches with 8-, 24-, or 48 ports
- SFP (1G) or SFP+ (10G) uplink ports on all models
- Power-over-Ethernet (PoE) options available to power PoE-capable devices
- Easy to set up and deploy
- Unified management via Sophos Central
- Ideal for branch office, retail, and SMB use cases
- Active Threat Response to isolate potentially compromised hosts
- A single vendor for the full network stack



SOPHOS

Sophos Switch – Model overview

We offer three different series within our model range:

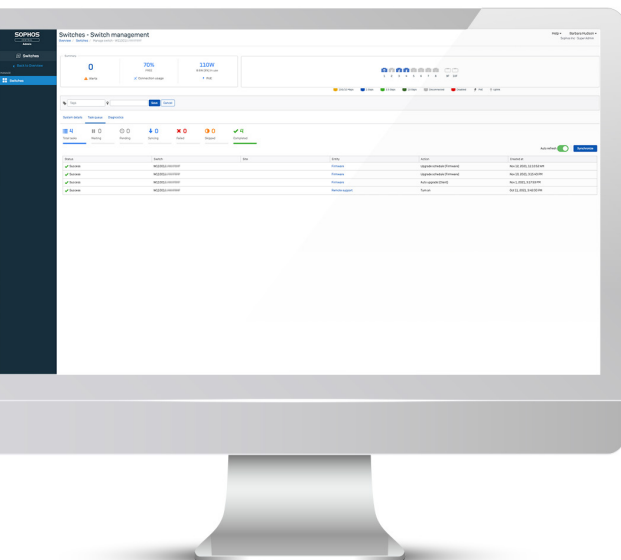
- 100 Series models offer 1 GE Ethernet ports plus either SFP or SFP+
- 200 Series models are equipped with 2.5 GE ports plus SFP+
 - Each of these series includes 8-, 24-, and 48-port models
- 1000 Series offers a single 8-port model with 10 GE connectivity plus SFP+

8-Port Switches

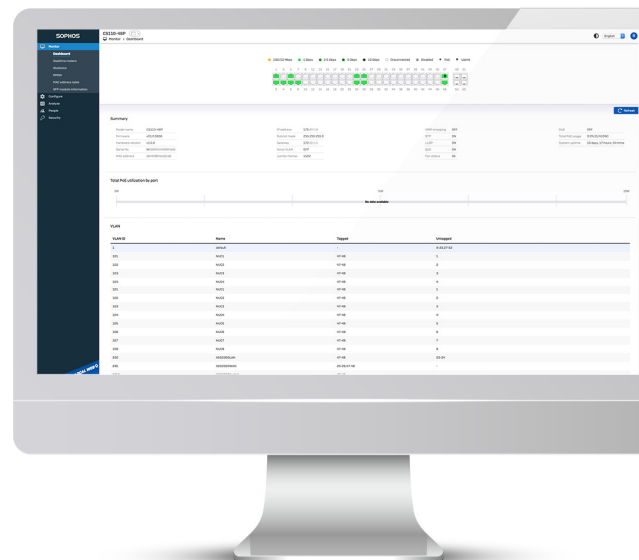
	100 Series		200 Series	1000 Series
<i>Model</i>	<i>CS101-8</i>	<i>CS101-8FP</i>	<i>CS210-8FP</i>	<i>CS1010-8FP</i>
Hardware				
Form Factor	Desktop	Desktop	1U	1U
Mounting	Wall mount	Wall mount	Rackmount	Rackmount
Technical Specifications				
Switching Capacity [Gbps]	20	20	120	120
MAC Address Table	8K	8K	8K	32K
Packet Buffer Memory	512 KB	512 KB	512 KB	2 MB
VLANs	Support for up to 256 VLANs simultaneously (out of 4096 VLAN IDs)	Support for up to 256 VLANs simultaneously (out of 4096 VLAN IDs)	Support for up to 256 VLANs simultaneously (out of 4096 VLAN IDs)	Support for up to 256 VLANs simultaneously (out of 4096 VLAN IDs)
Network Interfaces				
10/100/1000Base-T	8	8	-	-
100/1000Base-T/2500Base-T **	-	-	8	-
1G/2.5G/5G/10G base-T	-	-	-	8
SFP 1G	2	2	-	-
SFP+ 1G/10G	-	-	4	4
Other Interfaces	DC-In on/off switch	DC-In on/off switch	Console port AC power socket	Console port AC power socket
Power over Ethernet				
Power Budget	n/a	110W	240W	410W
PoE-capable Ports	n/a	1 to 8	1 to 8	1 to 8
Supported PoE Standard	n/a	802.3af/802.3at	802.3af/802.3at/802.3bt	802.3af/802.3at/802.3bt
Max. PoE Devices	n/a	7 [15.4W]/3 [30W]	8 [15.4W]/8 [30W]/4 [60W]	8 [15.4W]/8 [30W]/up to 8* [60W]

* The 410W power budget is sufficient for up to six 60W devices or eight PoE++ devices with slightly lower power consumption, such as the Sophos AP6 840E access point

**10M full and half duplex and 100M half-duplex speeds are not supported on this model



Sophos Central Management



Local Web Management

24-Port Switches

	100 Series		200 Series
Model	CS110-24	CS110-24FP	CS210-24FP
Hardware			
Form Factor	1U	1U	1U
Mounting	Rackmount	Rackmount	Rackmount
Technical Specifications			
Switching Capacity [Gbps]	128	128	152
MAC Address Table	16K	16K	16K
Packet Buffer Memory	1.5 MB	1.5 MB	1.5 MB
VLANs	Support for up to 256 VLANs simultaneously (out of 4096 VLAN IDs)	Support for up to 256 VLANs simultaneously (out of 4096 VLAN IDs)	Support for up to 256 VLANs simultaneously (out of 4096 VLAN IDs)
Network Interfaces			
10/100/1000Base-T	24	24	16
100/1000Base-T/2500Base-T	-	-	8
SFP 1G	0	0	0
SFP+ 1G/10G	4	4	4
Other Interfaces	Console port AC power socket	Console port AC power socket	Console port AC power socket
Power over Ethernet			
Power Budget	n/a	410W	410W
PoE-Capable Ports	n/a	1 to 24	1 to 24
Supported PoE Standard	n/a	802.3af/802.3at	802.3af/802.3at
Max. PoE Devices	n/a	24 (15.4W)/13 (30W)	24 (15.4W)/13 (30W)

48-Port Switches

	100 Series			200 Series
Model	CS110-48	CS110-48P	CS110-48FP	CS210-48FP
Hardware				
Form Factor	1U	1U	1U	1U
Mounting	Rackmount	Rackmount	Rackmount	Rackmount
Technical Specifications				
Switching Capacity [Gbps]	176	176	176	224
MAC Address Table	32K	32K	32K	32K
Packet Buffer Memory	2 MB	2 MB	2 MB	2 MB
VLANs	Support for up to 256 VLANs simultaneously (out of 4096 VLAN IDs)	Support for up to 256 VLANs simultaneously (out of 4096 VLAN IDs)	Support for up to 256 VLANs simultaneously (out of 4096 VLAN IDs)	Support for up to 256 VLANs simultaneously (out of 4096 VLAN IDs)
Network Interfaces				
10/100/1000Base-T	48	48	48	32
100/1000Base-T/2500Base-T	-	-	-	16
SFP 1G	0	0	0	0
SFP+ 1G/10G	4	4	4	4
Other Interfaces	Console port AC power socket	Console port AC power socket	Console port AC power socket	Console port AC power socket
Power over Ethernet				
Power Budget	n/a	410W	740W	740W
PoE-capable Ports	n/a	1 to 48	1 to 48	1 to 48
Supported PoE Standard	n/a	802.3af/802.3at	802.3af/802.3at	802.3af/802.3at
Max. PoE Devices	n/a	26 (15.4W)/13 (30W)	48 (15.4W)/24 (30W)	48 (15.4W)/24 (30W)

Sophos Switch management

Sophos Central is the single point of truth for resellers, managed service providers, and customer admins. Whether you're managing a single switch or a large, distributed network deployment with multiple products, Sophos Central eases management and has all your other Sophos products just a click away.

You have the following options to manage your switches:

Sophos Central

Single pane of glass for all your Sophos solutions.
Limited configuration upon first release.

Sophos Central management is included in the Support and Services subscription.

Local Web Management*

Access the full feature set and all configuration options of your switch from the very first release.

Web management is included in the purchase price of your switch.

Command Line Interface (CLI)*

For network administrators who prefer to manage their switch via the command line interface (CLI).

CLI management is included in the purchase price of your switch.

SNMP*

SNMP is supported on all switches for management and monitoring.

SNMP management is included in the purchase price of your switch.

Active Threat Response

Managing your switches in Sophos Central unlocks additional capabilities to integrate with other Sophos solutions and services.

With Active Threat Response, threat feeds triggered via an API initiate an automatic response to isolate compromised hosts across all Sophos switches and AP6 Series access points on the network. Threat feeds can originate from Sophos MDR, Sophos XDR, and even third-party security solutions. For customers using Sophos NDR, this functionality adds a response action to detections from deep within the network.

Benefits

- Isolates wired, wireless, managed, and unmanaged hosts.
- Prevents lateral movement and buys you time for remediation.
- Detects issues originating from multiple sources [Sophos or third-party solutions].

Active Threat Response is available via Sophos Central for Sophos Switch, Sophos Wireless (AP6 Series only), and Sophos Firewall.

While a Sophos Firewall is not a prerequisite for Active Threat Response with Sophos Switch, customers who also own a Sophos Firewall benefit from different response actions and enhanced automation, resulting in a faster time to remediation at every network layer.

Sophos Switch – Software Features

	Feature Availability by Model
Management and Configuration	
Switch Auto-Discovery	✓ [all models]
Dynamic VLAN Configuration	✓ [GVRP] – all models
LAG Group Size (up to 8)	8 – all models
Total Link Aggregation Groups (Up to # of ports)	8 – all models
IGMP Snooping	✓ [all models]
Static Routing	✓ [all models] IPv4: 59 entries for static route, 4 entries for interface route and 1 entry for default route. IPv6: 5 entries for static route, 16 entries for interface route and 1 entry for default route.
802.1x Authentication	✓ [all models]
IEEE 802.1x MAC Authentication Bypass (MAB) - (host, port, and fallback)	✓ [all models]
Syslog Collection	✓ [all models]
IP/MAC ACL	✓ [all models]
Jumbo Frames	✓ [CS101-8/8FP: size 9K, per system setting] [other models: size 10K, per port setting]
Auto-Negotiation for Port Speed and Duplex	✓ [all models]
MDI/MDIX Auto-crossover	✓ [all models]
IEEE 802.1D MAC Bridging/ STP (RSTP compatible)	✓ [all models]
IEEE 802.1w Rapid Spanning Tree Protocol (RSTP)	✓ [all models]
IEEE 802.1s Multiple Spanning Tree Protocol (MSTP)	✓ [all models]
Edge Port / Port Fast	✓ [all models]
IEEE 802.1Q VLAN Tagging	✓ [all models]
Guest VLAN and Voice VLAN	✓ [all models]
IEEE 802.3ad Link Aggregation with LACP	✓ [all models]
Unicast/Multicast Traffic Balancing Over Trunk Port	✓ [all models]
IEEE 802.1AX Link Aggregation	✓ [all models]
Spanning Tree Instances (MSTP/CST)	✓ [all models]
IEEE 802.3x Flow Control and Back-Pressure	✓ [all models]
IEEE 802.3 10Base-T	✓ for 100 series only (not supported on 200 series)
IEEE 802.3u 100Base-TX	✓ [all models]
IEEE 802.3z 1000Base-SX/LX	✓ [all models]
IEEE 802.3ab 1000Base-T	✓ [all models]
IEEE 802.3bz Multi-Gigabit Ethernet Support	✓ [all models that support 2.5 GE and above]
IEEE 802.3 CSMA/CD Access Method and Physical Layer Specifications	✓ [all models]
Storm Control	✓ [all models]
Port Mirroring	✓ [all models]
DHCP Relay	✓ [all models]

	Feature Availability by Model
Security and Visibility	
ACL - Maximum Entries Per Group	128
Max. ACL Groups	2 for CS101-8/8FP, 8 for all other models
IEEE 802.1x Authentication Port-Based	✓ [all models]
IEEE 802.1x Guest VLAN	✓ [all models]
IEEE 802.1ab Link Layer Discovery Protocol (LLDP)	✓ [all models]
IEEE 802.1ab LLDP-MED	✓ LLDP MED on PoE models only
DHCP-Snooping	✓ [all models]
Cisco-compliant Discovery Protocol	✓ [all models]
MAC Address Filtering	✓ [all models]
Priority Tag - Packet Ingress Filtering	✓ [all models]
IP Source Guard	✓ [all models] (uses 1 ACL group if enabled)
Active Threat Response Sophos MDR/XDR Integration	✓ [all models] (requires a valid support subscription)
Quality of Service	
IEEE 802.1p Based Priority Queuing	✓ [all models]
IP TOS/DSCP Based Priority Queuing	✓ [all models]
Continuous Power over Ethernet (PoE)	✓ [all models with PoE except CS101-8FP]
Management	
IPv4 and IPv6 Management (IP assignment supports DHCP or static address; Sophos defines default mode of operation)	✓ [all models]
SSH	✓ [all models]
HTTPS	✓ [all models]
SNMP v1/v2c/v3	✓ [all models]
SSH, Web Interface, and REST API	✓ [all models]
Sophos Central	✓ [all models]
RFC and MIB Support	
DHCP Client	✓ [all models]
RFC 854 Telnet Server	✓ [all models]
RFC 2865 RADIUS for 802.1X authentication	✓ [all models]
RFC 1643 Ethernet-like Interface MIB	✓ [all models]
RFC 1213 MIB-II	✓ [all models]
RFC 1157 SNMPv1/v2c	✓ [all models]
RFC 2618 RADIUS Authentication Client MIB	✓ [all models]
RFC 1493 Bridge MIB	✓ [all models]

How to Buy

<i>What You Purchase</i>	<i>What Your Purchase Includes</i>
Sophos Switch hardware	Sold per switch
Included in the hardware purchase cost	Local Web/CLI/SNMP management Limited lifetime warranty
Sophos Switch Support and Services	Sold per switch per year
Subscription entitles you to:	Sophos Central Management, with access to additional features Advanced RMA support 24x7 multi-channel support Firmware updates
If subscription expires or is not purchased	Sophos Central management goes into read-only Firmware updates are not available No phone support No advanced RMA support
*Important Note	Your Sophos Switch will always work via local configuration without a Support and Services subscription, however, with the above limitations

Further information about the limited lifetime warranty is available under sophos.com/legal.

Support access for Sophos Switch

Sophos Support access can be activated for switches that are registered and connected to Sophos Central only. For switches not registered in Sophos Central, troubleshooting/debugging will be limited.

**For further information,
please visit sophos.com/switch**

United Kingdom and Worldwide Sales
Tel: +44 (0)8447 671131
Email: sales@sophos.com

North American Sales
Toll Free: 1-866-866-2802
Email: nasales@sophos.com

Australia and New Zealand Sales
Tel: +61 2 9409 9100
Email: sales@sophos.com.au

Asia Sales
Tel: +65 62244168
Email: salesasia@sophos.com

Sophos Wireless



The smarter way to simple, secure Wi-Fi

Sophos Wireless and our unified cloud management platform simplify your wireless network management and security, saving you valuable time and resources.

Sophos Wireless: As easy as 1,2,3

Your Wi-Fi networks will be up and running in no time with our three-step setup.

One platform

With our single-platform approach, your Wi-Fi is always just one click away from your next Sophos solution. You can manage your Wi-Fi alongside your firewalls and switches, endpoint and server security, email protection, and more.

Two ways to manage

Remotely manage your full Wi-Fi estate in Sophos Central or make individual AP settings in the local user interface (AP6 Series only).

Three steps to connect

Sophos Wireless is easy to set up and deploy. Create a wireless network, register your access point, and connect. This simple onboarding process ensures your Wi-Fi networks are up and running in minutes.

Our pragmatic approach to cybersecurity

Our range of award-winning solutions and services simplifies your security and allows you to focus on your core business objectives. While your IT peers are switching from one console to the next in their complex, multi-vendor environments, you can have a single pane of glass for everything.

Get cross-product integration and features such as Active Threat Response, to enhance your security posture.

Our portfolio includes products and solutions for secure access inside and outside of your network. We offer ZTNA to provide granular access to applications, SD-WAN and remote Ethernet devices to secure your branch office connectivity, Sophos Firewall for the ultimate in network security and performance, and switches to power your access points and offer better network control.

You could use multiple consoles to manage your access and security, but all you need is one.

Highlights

- ▶ Scalable cloud platform for remote management
- ▶ Local web interface to manage a single AP
- ▶ Better performance and security with Wi-Fi 6/6E access points
- ▶ Active Threat Response for compromised host isolation
- ▶ Captive portal for guest and visitor access
- ▶ Centralized management alongside the entire Sophos ecosystem of cybersecurity solutions



SOPHOS

Sophos Wi-Fi portfolio overview

As a scalable, cloud-managed solution, with support for the latest generation of Wi-Fi 6/6E access points, Sophos Wireless is our recommendation for all of your wireless networks. This overview explains all currently available options to set up and secure Wi-Fi networks.



Sophos Wireless

Cloud-Managed Wi-Fi

Sophos Wireless is our Sophos Central-managed Wi-Fi solution. It offers the broadest feature set, the best scalability, and exclusive support for the latest generation of Wi-Fi 6/6E access points, the AP6 Series.

As a single management platform for all of your Sophos security solutions, Sophos Central puts your Wi-Fi management just one click away from your firewalls and switches, endpoint and server security, email protection, and more. Sophos Central also unlocks additional capabilities, such as Active Threat Response.

The following access points can be managed in Sophos Central:

- **AP6 Series:** Wi-Fi 6/6E 802.11ax [all models]
- **APX Series:** Wi-Fi 5 802.11ac Wave 2 [all models] – sold as long as stock lasts only. End-of-life date: December 31, 2027



Sophos Firewall

Integrated Wi-Fi models

XGS Series desktop form-factor firewalls are available with integrated Wi-Fi. This option is suitable for smaller deployments, such as retail stores, where a single device is deployed for network security.

The following XGS Series firewalls have integrated Wi-Fi:

- **XGS Series:** XGS 87w, 107w, 116w, 126w, 136w

The following XGS Series firewalls additionally support the use of an optional Wi-Fi module:

- **XGS Series:** XGS 116w, 126w, 136w

Firewall as a controller

Sophos Firewall [XGS Series] can be used as a Wi-Fi controller for our end-of-sale Wi-Fi 5 APX Series access points only. We have announced an end-of-life date of December 31, 2027 for the APX Series; however, existing customers can continue to use APX on a supported platform until that date.

We will continue to sell any remaining APX models for as long as stock lasts. Please check with your local Sophos representative for further information.

For additional information, see sophos.com/firewall.

Sophos Wireless: Scalable, cloud-managed Wi-Fi

As more and more businesses shift infrastructure and solutions to the cloud, and remote and hybrid working models accelerate the demand for more flexibility, switching your Wi-Fi management to Sophos Central is not only a way to make better use of your resources, but it's also your path to the latest features and technology for a truly scalable Wi-Fi experience.

Sophos Wireless features

For a full overview of all features available in Sophos Wireless, please check out our website: sophos.com/wireless.

Benefits of Sophos Wireless



Cloud scalability

While on-premises, controller-based solutions can be limited by hardware resources, with Sophos Wireless, extending your network is as simple as adding an additional access point.



Remote management via a single platform

Sophos Central provides a single cloud platform to remotely manage your Wi-Fi alongside your firewalls and switches, endpoint and server security, email protection, mobile, and much more. A web user interface is also available to manage an individual AP6 access point.



Better performance and security

With exclusive support for our Wi-Fi 6/6E, AP6 Series access points, you get a significant performance improvement, 2.5G connectivity, and support for the latest WPA3 security standard.



Improved guest access experience

The first thing people do upon entering your premises is look for the Wi-Fi password, and Sophos has you covered. Give your employees, guests, and visitors a better Wi-Fi experience with our many authentication options.



Click and connect

Whether you're a wireless pro or an IT all-rounder with limited Wi-Fi knowledge, our user interface will guide you through access point registration and network configuration, so that your users are connected in next to no time.



Wi-Fi 6/6E (802.11ax)

Improved performance, better security with WPA3, and the option to use the less-congested 6 GHz band (where available), make Wi-Fi 6/6E the standard of choice, particularly for high-density environments.



Active Threat Response

Isolate compromised hosts at the access layer

API-triggered threat feeds initiate an automatic response to isolate compromised hosts across all Sophos AP6 Series access points and Sophos switches on the network.

- Isolates wired and wireless, managed, and unmanaged hosts
- Prevents lateral movement and buys you time for remediation
- Detections can originate from Sophos MDR, Sophos XDR, Sophos NDR, or third-party solutions

Active Threat Response is available via Sophos Central for Sophos Wireless (AP6 Series only), Sophos Switch, and is also supported on Sophos Firewall.






While a Sophos Firewall is not a prerequisite for this functionality on Sophos Wireless, customers who also own a Sophos Firewall benefit from different response actions and enhanced automation, resulting in a faster time to remediation at every network layer.

AP6 Series: cloud-managed Wi-Fi 6/6E Access Points

Our latest generation of Wi-Fi 6/6E access points offers a range of models to suit many different environments. With four indoor models and one IP67-rated outdoor model, they are ideal for both new and existing customers to replace their Wi-Fi infrastructure as part of a network upgrade or vendor consolidation project.

Sophos AP6 Series

With Wi-Fi 6, broad device support is guaranteed with all AP6 models offering support for the 2.4 and 5 GHz bands. Improved performance and better security with WPA3 add to the benefits of this WLAN generation. Wi-Fi 6E extends the capabilities and features of Wi-Fi 6 into the 6 GHz band*. For further information, please visit: sophos.com/wireless.

Model	AP6 420	AP6 420E	AP6 840	AP6 840E	AP6 420X
					
WLAN Standards	802.11ax Wi-Fi 6	802.11ax Wi-Fi 6/6E	802.11ax Wi-Fi 6	802.11ax Wi-Fi 6/6E	802.11ax Wi-Fi 6
Management	Sophos Central (see management and support below). Local web interface (single AP6 only) AP6 Series access points cannot be managed from any Sophos firewall.				
Deployment	Indoor; desktop, wall, or ceiling mount				Outdoor; pole/wall mount IP67
Radios*	Dual Radio 1 x 2.4 GHz single-band 1 x 5 GHz single-band	Tri-radio 1x 2.4 GHz single-band 1x 5 GHz single-band 1x 6 GHz single-band	Dual Radio 1x 2.4 GHz single-band 1x 5 GHz single-band	Tri-radio 1x 2.4 GHz single-band 1x 5 GHz single-band 1x 6 GHz single-band	Dual Radio 1x 2.4 GHz single-band 1x 5 GHz single-band
Antennas	Internal omnidirectional	Internal omnidirectional	Internal omnidirectional	Internal omnidirectional	External omnidirectional
Antenna Options	-	-	-	-	120° Sector, 30° Directional
DFS	✓	✓	✓	✓	✓
Performance	2 x 2:2	2 x 2:2	4 x 4:4	4 x 4:4	2 x 2:2
Interfaces	1x 1GE w/PoE+	1x 2.5G w/PoE+	1x 2.5G w/PoE+	1x 2.5G w/PoE++ 1 x 2.5G without PoE	1x 2.5G w/PoE+
Power (max.)	17.5 W	24.25 W	30 W	45 W	30 W
Power-over-Ethernet (min.)**	802.3at (PoE+) Suitable PoE+ injector or switch available for separate purchase	802.3at (PoE+) Suitable PoE+ injector or switch available for separate purchase	802.3at (PoE+) Suitable PoE+ injector or switch available for separate purchase	802.3bt (PoE++) Suitable PoE++ injector or CS210-8FP switch available for separate purchase	802.3at (PoE+) Suitable PoE+ injector or switch available for separate purchase
Dimensions Width x Height x Depth	183 x 35 x 183 mm 7.2 x 1.38 x 7.2 inches	183 x 35 x 183 mm 7.2 x 1.38 x 7.2 inches	225 x 43 x 225 mm 8.86 x 1.54 x 8.86 inches	225 x 43 x 225 mm 8.86 x 1.54 x 8.86 inches	260.5 x 69 x 180 mm 10.26 x 2.72 x 7.09 inches
Weight	0.7 kg	0.7 kg	1.2 kg	1.2 kg	1.6 kg
Certifications and Compliance	CB, UL, CE, FCC, ISSED, RCM, TEC EN 60601-1-2 (Medical Equipment Directive)	CB, UL, CE, FCC, ISSED, RCM, TEC Plenum-rated (UL2043) EN 60601-1-2 (Medical Equipment Directive)	CB, UL, CE, FCC, ISSED, RCM, TEC Plenum-rated (UL2043) EN 60601-1-2 (Medical Equipment Directive)	CB, UL, CE, FCC, ISSED, RCM, TEC Plenum-rated (UL2043) EN 60601-1-2 (Medical Equipment Directive)	CB, UL, CE, FCC, ISSED, RCM, TEC EN 60601-1-2 (Medical Equipment Directive)

* 6 GHz is not available in all regions. See <https://www.wi-fi.org/countries-enabling-wi-fi-in-6-ghz-wi-fi-6e> for further information.

** Additional information and guidance on powering your access points is available at https://support.sophos.com/support/s/article/KB-000045501?language=en_US.

Powering your access points

If you only have a single access point, a Power over Ethernet (PoE) injector will likely be sufficient. In environments with multiple access points mounted on ceilings and walls, you'll soon run out of power sockets.

Sophos access layer switches with PoE are the perfect enhancement to your Wi-Fi deployment. By using Sophos Central, you can manage them from the same console as your access points.

AP6 Model	Minimum PoE Standard	Our Recommendation
AP6 420	802.3at PoE+ (30W per port)	Use any Sophos PoE+ injector or PoE capable switch
AP6 420E		
AP6 420X		
AP6 840		
AP6 840E	802.3bt PoE++ (60W per port)	Use the Sophos Switch CS210-8FP or the Sophos PoE++ 60W injector

Additional information and guidance is available at https://support.sophos.com/support/s/article/KB-000045501?language=en_US.

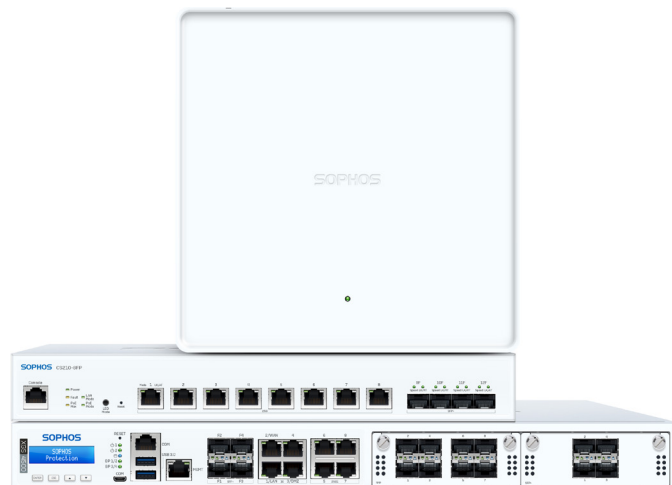
APX Model	Minimum PoE Standard	Our Recommendation
APX 120	802.3af PoE (15.4W per port)	Use any Sophos PoE injector or PoE capable switch
APX 320		
APX 320X	802.3at PoE+ (30W per port)	Use any Sophos PoE+ injector or PoE capable switch
APX 530		
APX 740		

2.5G connectivity: No more network bottlenecks

Reap the benefits of the improved performance of Wi-Fi 6 and Wi-Fi 6E by refreshing your network infrastructure. With 2.5G Ethernet connectivity on your access layer switches and your access points, you can prevent network bottlenecks and give your users a better overall Wi-Fi experience.

All AP6 models (except the AP6 420) have at least one 2.5G interface built in for faster LAN connectivity. When combined with our range of 2.5G switches, you can unlock faster speeds across your entire network.

Further information: sophos.com/switch.

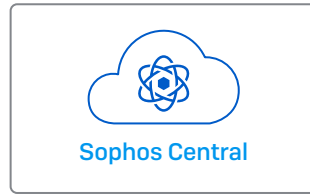


Management and support

Our single-platform approach is ideal for consolidating your security operations and improving network administration.

AP6 Series

There are two different ways to manage the AP6 Series.



Our single cloud platform to remotely manage all of your Sophos solutions.

Requires support subscription per AP.



A local user interface via your browser to manage a single AP on site.

Included in hardware purchase.

AP6 Series warranty and support

- **AP6 Series Warranty:** Limited lifetime warranty.
- **AP6 Series Support:** A support and services subscription per AP entitles you to Sophos Central management, firmware updates, Advanced RMA, and 24/7 multi-channel support. Features delivered via Sophos Central are only available in combination with a valid AP6 support contract.

Sophos Support remote debugging is only possible for AP6s managed in Sophos Central.



Optional Accessories

We have a number of options available to cover different deployment scenarios.

- › **Mounting kits**
 - Kits for flat-ceiling, plenum, and suspend mount.
- › **Optional antennas**
 - 120° sector antenna and 30° directional antenna available for the outdoor model.
- › **POE injectors**
 - Suitable PoE+ and PoE++ injectors are available.
- › **Power supply**
 - External supply available for AP6 420.
- › **Sophos Switch**
 - The ideal option to power your Sophos access points and other PoE-capable devices. See: sophos.com/switch.

Learn more at
sophos.com/wireless

United Kingdom and Worldwide Sales
Tel: +44 (0)8447 671131
Email: sales@sophos.com

North American Sales
Toll Free: 1-866-866-2802
Email: nasales@sophos.com

Australia and New Zealand Sales
Tel: +61 2 9409 9100
Email: sales@sophos.com.au

Asia Sales
Tel: +65 62244168
Email: salesasia@sophos.com