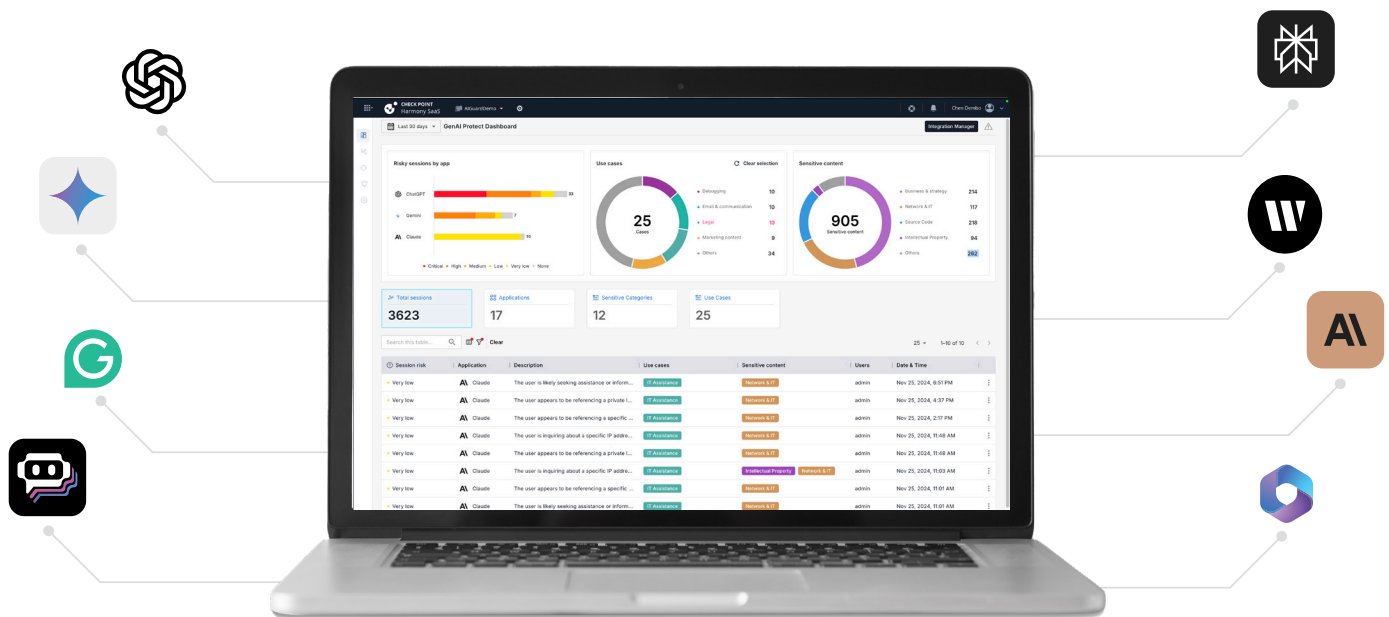


# Adopt GenAI Safely with Check Point's GenAI Protect

The adoption of GenAI applications is becoming increasingly prevalent but it also introduces significant risks. To ensure the safe use of these powerful tools, Check Point's GenAI Protect solution offers comprehensive security and compliance features, designed to handle the unstructured, conversational context of GenAI prompts. It provides visibility, risk assessment, and real-time data loss prevention.

## Generative AI Apps Accelerate Your Business, But They Put Your Data & Compliance at Risk

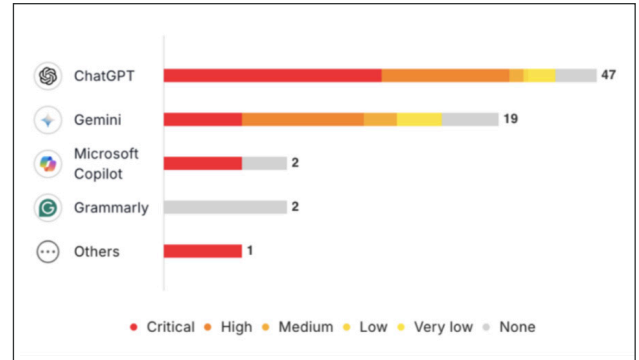
### Embrace the revolution safely with GenAI Protect



GenAI Protect Dashboard

## Discover and assess risk of GenAI app usage in your enterprise

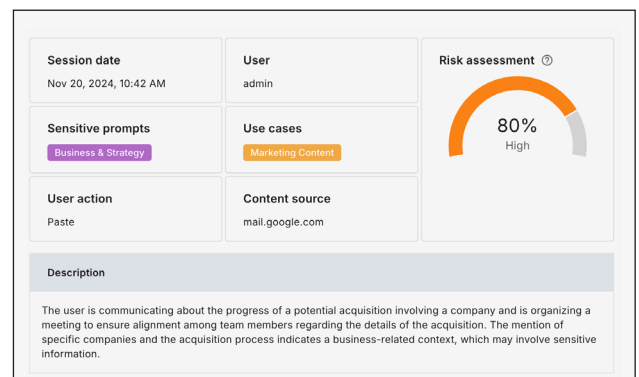
- Identify and monitor sanctioned and shadow GenAI apps used by employees.
- Understand user intent and assess risk with breakdown of GenAI activity at application and session level, including Description, User Action, Data source and more.



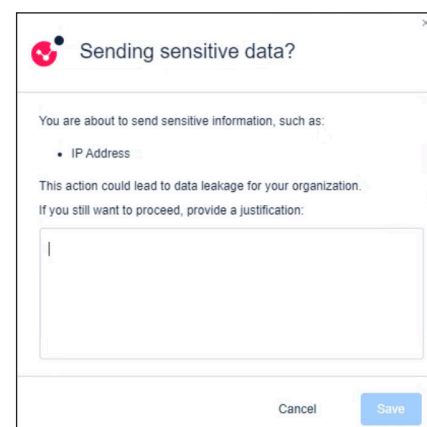
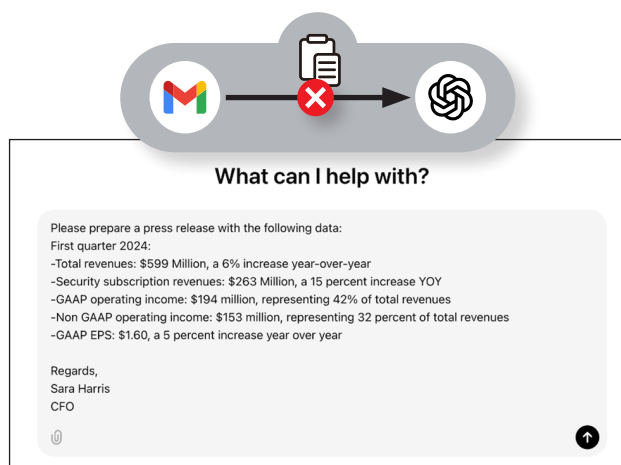
App Session Risk Breakdown

## Prevent data loss in real time

- AI-powered data analysis to accurately classify conversational data within prompts.
- Uncover what GenAI is used for with tens of use case categories such as: Marketing, Debugging, Legal, Email & Communication and more.
- Set your own policy restrictions including granular policy per app and copy/paste restrictions.
- Interactive user experience with action validation wizard, minimizing data loss risk while enabling productivity.



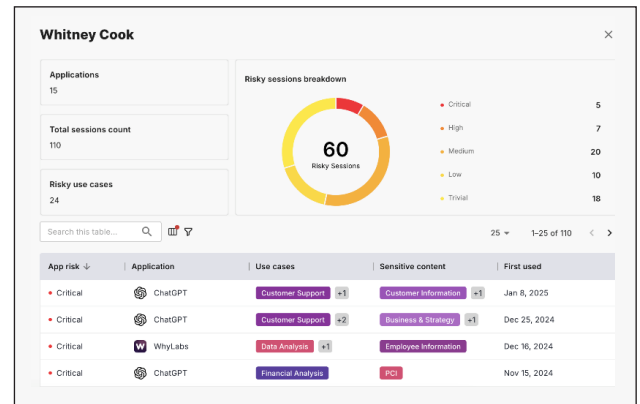
Session Overview



User Notification

## Meet regulations with enterprise-grade visibility, monitoring and reporting

- Get granular monitoring and audit trail to facilitate regulatory compliance with GDPR, HIPAA and EU ACT.
- Gain visibility into risky events, including specific user prompts.
- Create customizable reports to demonstrate progress and share with the board.



User Overview

## How It Works

Check Point's GenAI security solution lets you take control of GenAI usage across your organization by making informed decisions regarding GenAI adoption and apply policies with a choice of enforcement points.

### Browser Extension

Prevent the submission and copy-pasting of sensitive data into GenAI applications with a lightweight browser extension. Customers of Harmony Browse, Harmony Endpoint, and Harmony SASE Essentials+ can upgrade to access new GenAI discovery and DLP capabilities. Non-customers can get started in minutes.

### Harmony Next-Gen DLP

Check Point's GenAI security solution uses our next-gen Harmony DLP cloud service to recognize sensitive unstructured data in prompts. Leverage our advanced DLP service for other data protection needs across your workspace to recognize over 700+ predefined data types, custom data types, sensitive data within images using optical character recognition (OCR) and more.

### Available with



Harmony  
SASE



Harmony  
Endpoint



Harmony  
Browse

## Check Point's GenAI Protect is different

### Installs in Minutes

Unlike other solutions that require extensive integration, the browser extension installs with a few clicks. This means you can start uncovering your GenAI landscape and enforcing policies right away.

### Visibility into GenAI Use Cases

To help you make informed decisions, the solution uncovers the top use case categories for GenAI usage in your organization, which may include marketing content, code generation, data analysis, and more.

### AI-based Grasp of Context

To understand whether content entered a prompt is sensitive, we use transformative AI-powered data analysis that identifies context to deliver precision control, while avoiding the need to define cumbersome data-types.

---

## Get Started Today

Ready to tackle **GenAI** challenges in your organization?

Request a

Demo



or

Free Trial



---

### Worldwide Headquarters

5 Ha'Solelim Street, Tel Aviv 67897, Israel | Tel: 972-3-753-4555 | Fax: 972-3-624-1100 | Email: [info@checkpoint.com](mailto:info@checkpoint.com)

### U.S. Headquarters

100 Oracle Parkway, Suite 800, Redwood City, CA 94065 | Tel: 1-800-429-4391

[www.checkpoint.com](http://www.checkpoint.com)